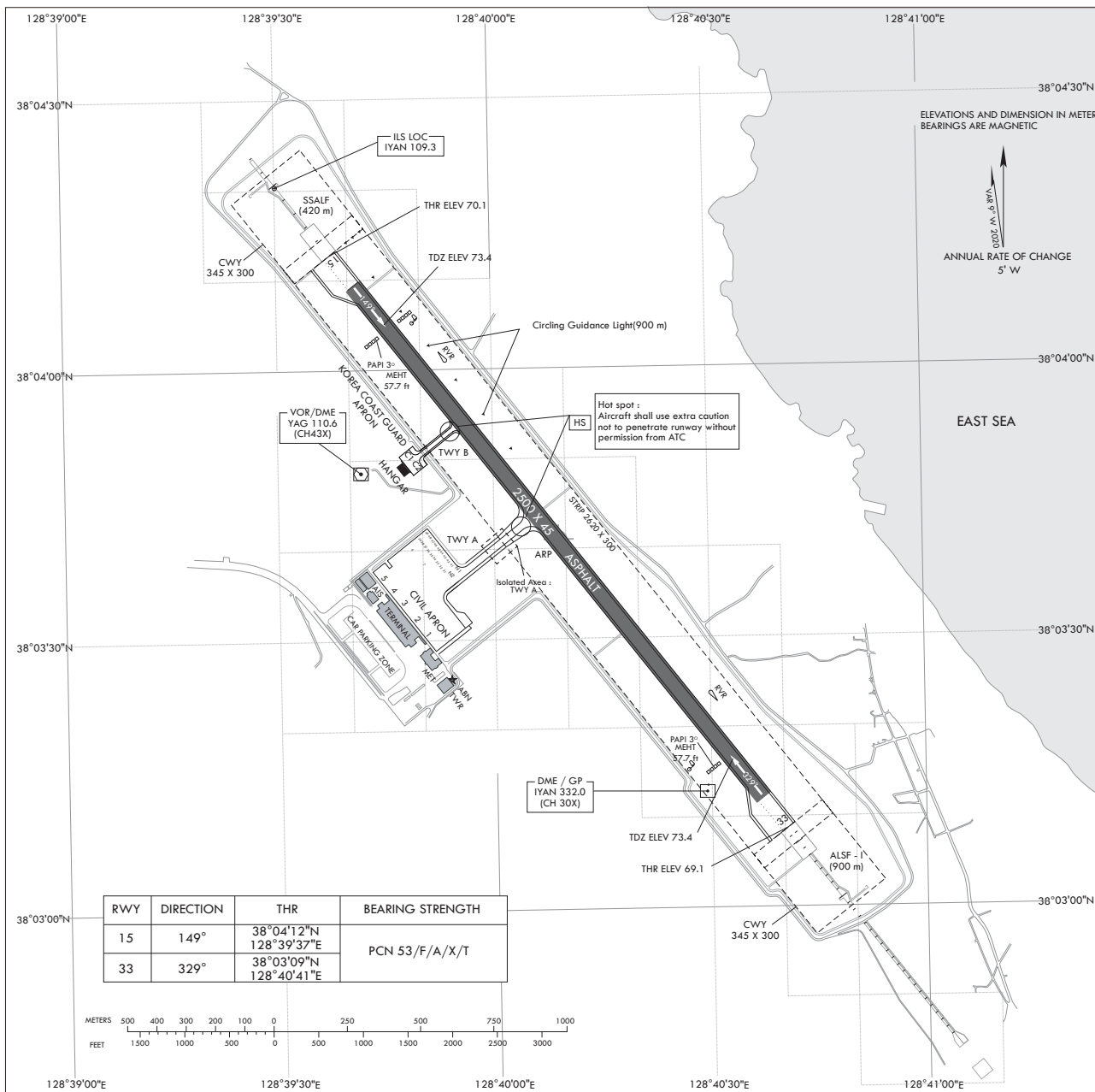


**AERODROME
CHART - ICAO**

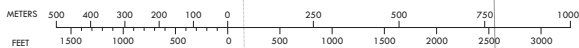
38°03'41"N
128°40'09"E ELEV 73 m

TWR	118.85	
	124.375	240.4
GND	124.3	240.4

YANGYANG/Yangyang Intl



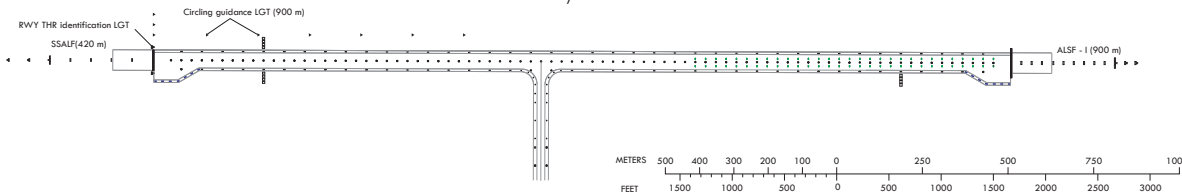
RWY	DIRECTION	THR	BEARING	STRENGTH
15	149°	38°04'12"N 128°39'37"E	PCN 53/F/A/X/T	
33	329°	38°03'09"N 128°40'41"E		



MARKING AIDS RWY 15 / 33 AND EXIT TWY



LIGHTING AIDS RWY 15 / 33 AND EXIT TWY



Change : Withdrawal of TWR frequency(123.15 MHz) and Information of GND frequency(123.15 MHz → 124.3 MHz).